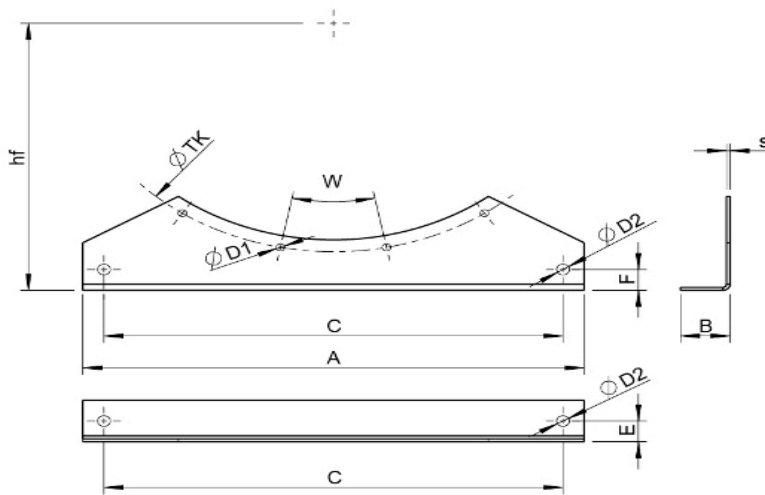


MFA AXC/AM *** mounting foot

Mounting feet for axial fans range AXC

The mounting foot MFA AXC is manufactured from hot dip galvanized steel, with holes for mounting at flanges according Eurovent 1/2.



	A	B	C	E	F	D2	s	TK	D1	W	hf
MFA AXC 800	800	80	730	40	40	18	5,0	860	12	22.5	530
MFA AXC 900	900	80	830	40	40	18	5,0	970	15	22.5	560
MFA AXC 1000	1000	80	930	40	40	18	5,0	1070	15	22.5	670
MFA AXC 1120	1120	80	1030	40	50	18	5,0	1190	15	18	710
MFA AXC 1250	1250	100	1180	50	50	18	5,0	1320	15	18	800